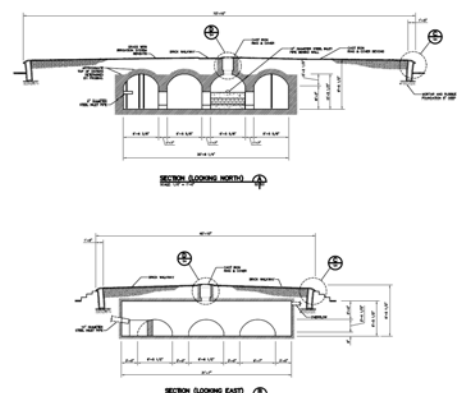
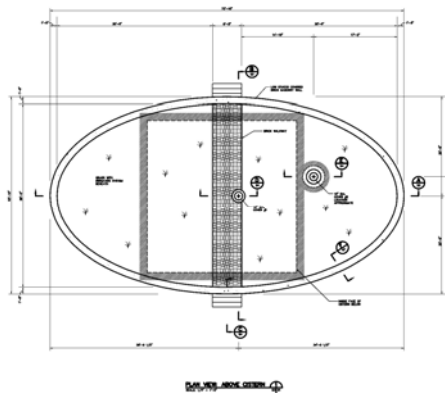




**College Of
Charleston
Stucco**
Charleston, SC

Randolph Hall, Towell Library, and Porter's Lodge are both centrally located on the historic campus of the College of Charleston. Randolph Hall is a National Historic Landmark and is also on the National Register of Historic Places.

4SE has been involved in the planning and structural design for the exterior restoration of all three masonry buildings including the historic cistern.



4SE, Inc.
7 Radcliffe Street
Suite 301
Charleston, SC 29403
Phone: 843-722-1992
Fax: 843-722-1211
www.4SEinc.com